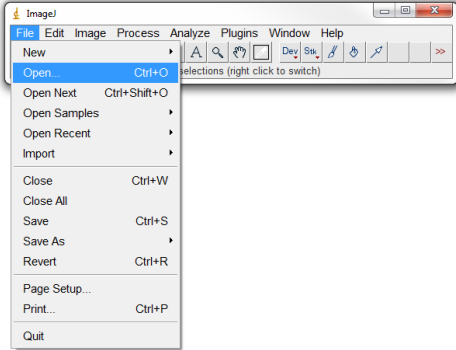
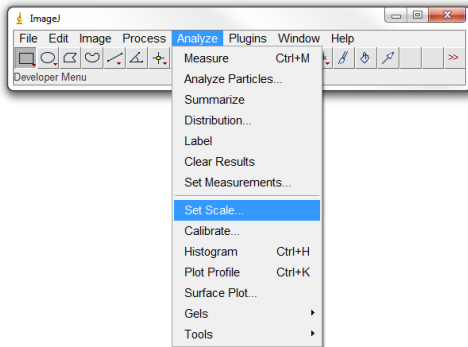


Assign Scale Bars Manually

a) Open the image you wish to amend.



b) With the image open, select **Analyze**, then **Set Scale**.



c) In the box provided, select the following values, then select **OK**.

i. Distance in pixels:

1. For HSI images:

- 60X this is **4.69**
- 100X this is **7.81**

2. For Optical (Dage) images:

- 10x this is
- 60x this is **8.10**

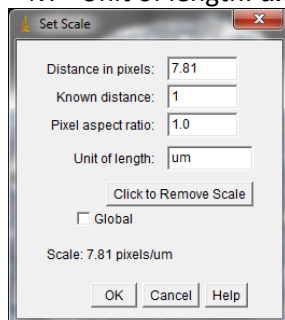
ii. Known distance: **1**

iii. Pixel aspect Ratio: **1.0**

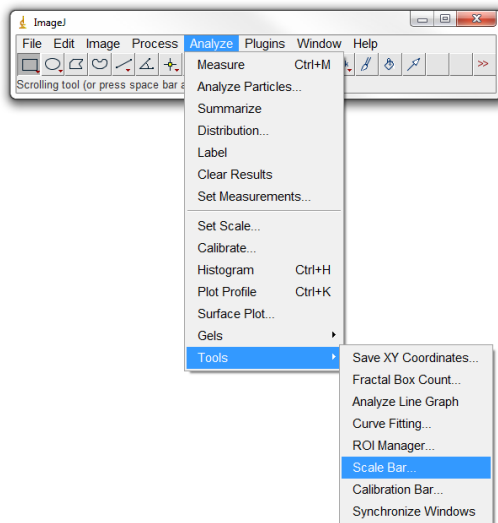
iv. Unit of length: **um**

HSI: Magnification / Pixel Size = $x / 2$ (binning) = Distance in Pixels
 $100/6.4=15.626 / 2 = 7.81$
 $60/6.4=9.375 / 2 = 4.69$

Optical: Magnification / Pixel Size = $x / 2$ (binning) = Distance in Pixels
 $60/$

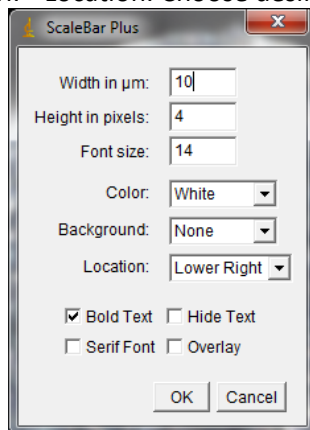


d) Next, select **Analyze**, then **Tools**, **Scale Bar**.



e) In the box provided, select the following values, then select **OK**.

- i. Width in μm : **10** is generally a reasonable value, but edit as needed
- ii. Height in pixels: **4** is generally a reasonable value, but edit as needed
- iii. Font size: **14** is generally a reasonable value, but edit as needed
- iv. Color: Choose desired color
- v. Background: Choose desired color
- vi. Location: Choose desired location

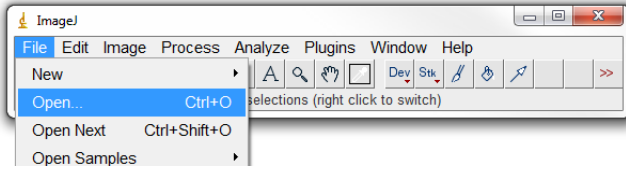


f) After selecting OK, you will be presented with the image with the scale bar added. Make sure to save the file before closing as the files with the added scale bar is not automatically saved

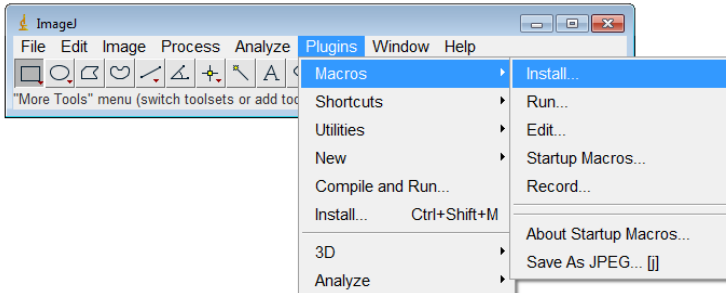


Assign Scale Bars Using Macros

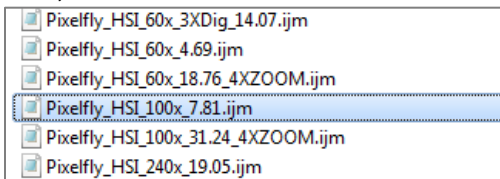
a) Open the image you wish to amend.



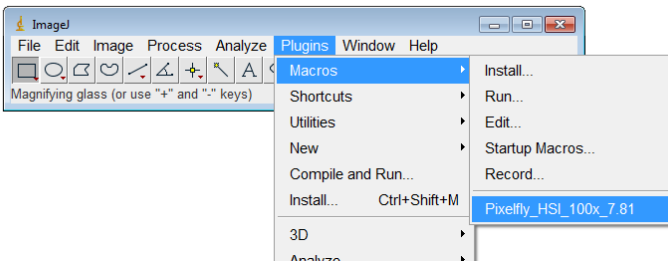
b) With the image open, select **Plugins**, then **Macros**, then **Install**.



c) Next, select the macro for the camera and magnification used to capture the image.



d) Now again select **Plugins**, then **Macros**, and you will see the macro you selected at the bottom of the macro menu. Click on the macro.



e) After selecting the macro, you will be presented with the image with the scale bar added. Make sure to save the file before closing as the files with the added scale bar is not automatically saved

